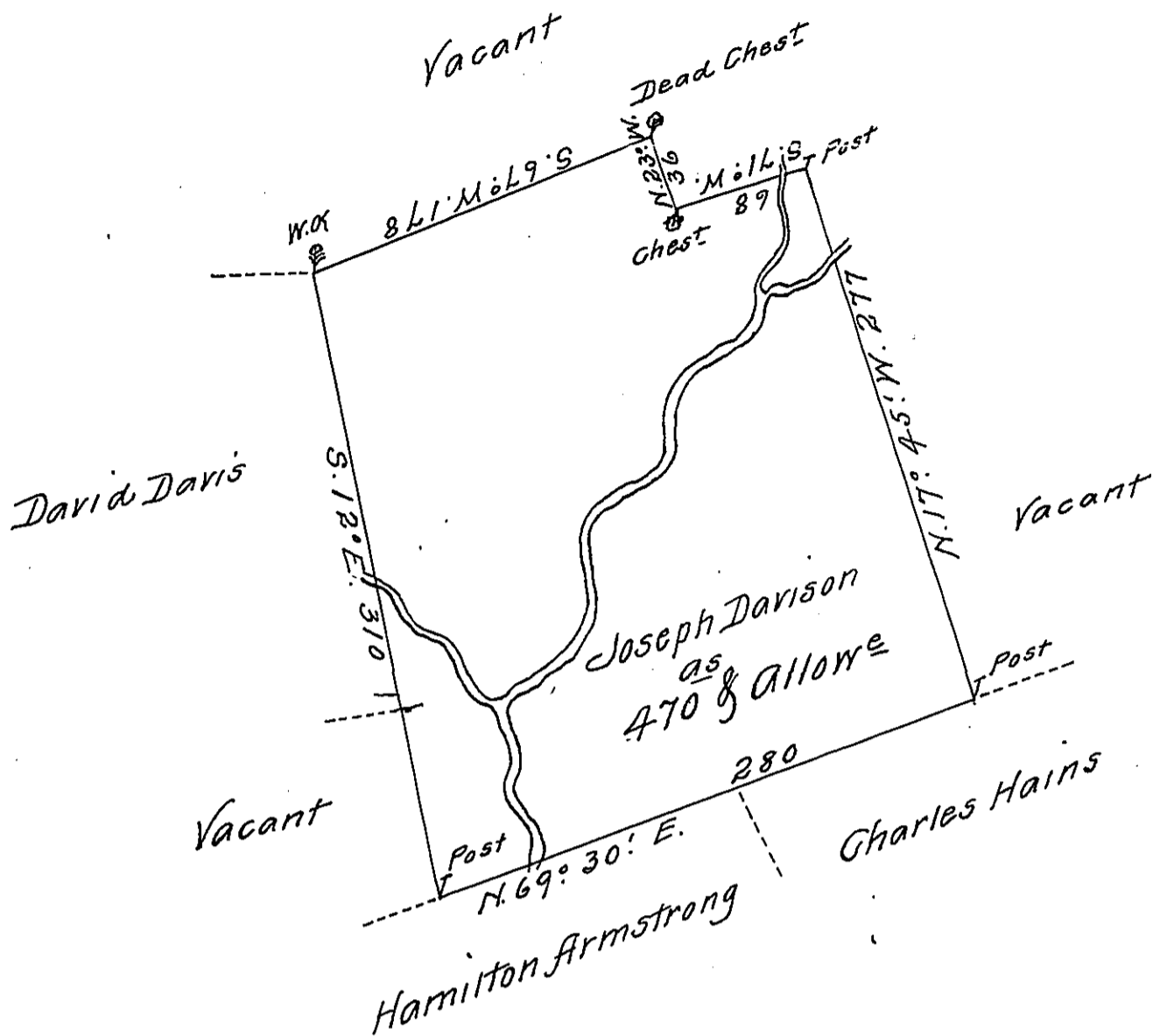


Butler
LUZETTE.



A Draught of a tract of land Called _____ Situate on the head of
the N. Branch of Nescopeck Creek Joining Land Surv^d for _____
David Davis & Co in Stoke Township Luzerne. (formerly North^d)
County Containing four Hundred & Seventy Acres and Allow^e
of Six p Cent for Joseph Davison the 13th Day of April 1787
in Pursuance of a Warrant Dated the 1st Day of July 1784.
by W^m Gray D.S.

To John Lukens Esq^r }
Surv^r Gen^l }

IN TESTIMONY that the above is a copy of the original remaining on file in
the Department of Internal Affairs of Pennsylvania, made
conformably to an Act of Assembly approved the 16th day of
February, 1833, I have hereunto set my Hand and caused
the Seal of said Department to be affixed at Harrisburg,
this Seventh day of March 1911

Henry Fowler
Secretary of Internal Affairs.